



X-PORTE



SonoSite
HFL50xp/15-6 Musculoskeletal
MI: 0.5 TIS: 0.4

3.1 cm
2D: G: 35
DR: 0
MB

SonoSite

HELLO, where would you like to start?





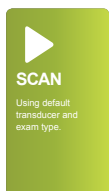
TECHNOLOGY DRIVEN
5-YEAR STANDARD WARRANTY
MADE IN THE USA

The World's First Ultrasound Kiosk

X-Porte represents an entirely new approach to clinical ultrasound. Its imaging, features, and educational resources are fluidly brought together in a convenient, all-in-one kiosk design.

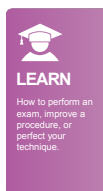
At the sweep of your hand, it responds so quickly and intelligently to your imaging needs, you'll know it was created precisely for professionals like you. Its self-explanatory control panel makes system navigation a breeze, and its sealed touch screen has no buttons for pathogens to hide behind.

X-Porte's slender profile makes it easy to maneuver alongside beds and exam tables for point-of-care visualization and procedures. For portability and durability during transport, its screen folds down and its stand lowers making X-Porte even more compact for navigating busy corridors. The X-Porte ultrasound core can be detached easily from the kiosk to provide another configuration option. For servicing, nothing could be more convenient than X-Porte's five-year warranty and removable engine.



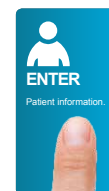
Breakthrough XDI Imaging

X-Porte's XDI beam-forming technology was created to meet the challenge of side-lobe artifacts, so now you can scan with image clarity, resolution, and color sensitivity never before seen in point-of-care ultrasound systems.



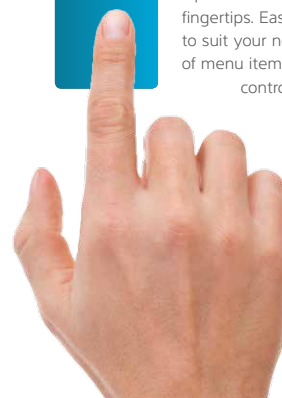
Real-Time Scan Along Learning

For instant reference, scan along with an onboard library of Visual Guides featuring step-by-step learning tutorials. Use X-Porte's Visual Guides for comparing 3D beam-direction animations to corresponding 2D ultrasound images.



Gesture-Driven Interface

Optimized workflow is always at your fingertips. Easily customize the interface to suit your needs. Don't like the order of menu items? Change them. Too many controls? Minimize them.



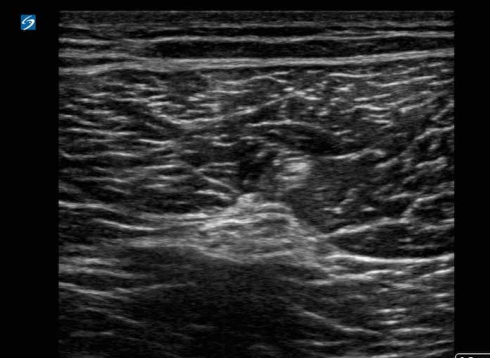
One look and the difference is clear—XDI patent-pending imaging technology drives X-Porte's image clarity and resolution by significantly reducing visual clutter.



SonoSite
C80xp/5-2 Abdomen
MI: 1.1 TIS: 0.2

8.7 cm
2D: G: 55
DR: 0
MB
THI

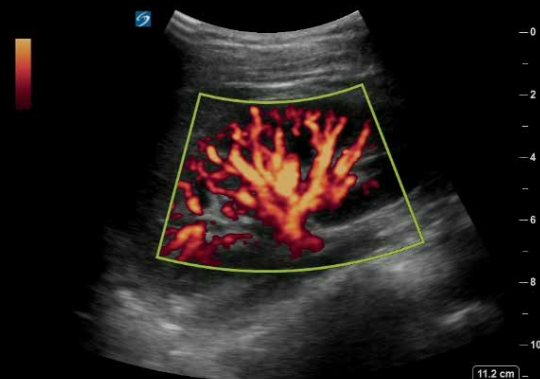
GALLBLADDER



SonoSite
HFL38xp/13-6 Nerve
MI: 0.6 TIS: 0.3

3.6 cm
2D: G: 60
DR: 0
MB

SCIATIC NERVE

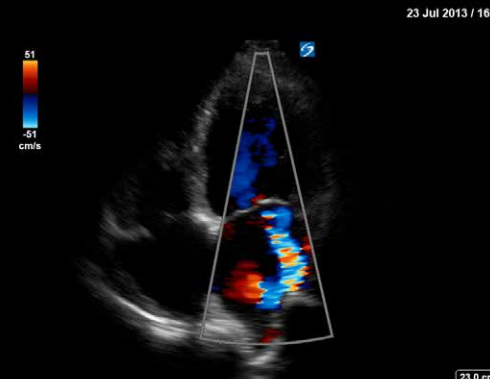


SonoSite
C80xp/5-2 Abdomen
MI: 0.9 TIS: 0.5

CPD: G: 50
Med
817Hz

11.2 cm
2D: G: 55
DR: 0

KIDNEY BLOOD FLOW



SonoSite
P21xp/5-1 Cardiac
MI: 0.8 TIS: 0.8

23 Jul 2013 / 16:00
Color: G: 64
Med
277Hz
23.0 cm
2D: G: 4
DR: 0
THI

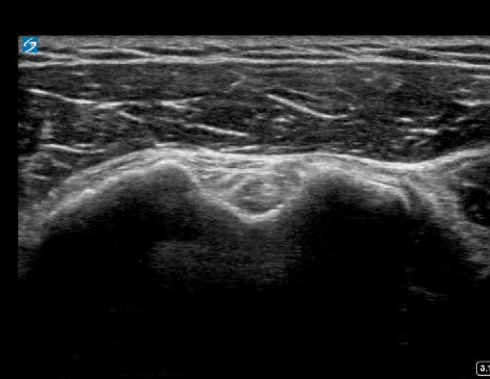
APICAL MITRAL



SonoSite
C80xp/5-2 Obstetrics
MI: 1.0 TIB: 0.2

16.2 cm
2D: G: 41
DR: 0
MB
THI

FETAL PROFILE

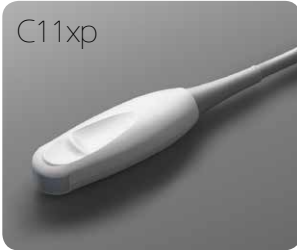


SonoSite
HFL50xp/15-6 Musculoskeletal
MI: 0.5 TIS: 0.4

5.1 cm
2D: G: 4
DR: 0
ME

BICEPS TENDON

C11xp



Applications:
abdominal, arterial, neonatal,
nerve, venous
8-5 MHz Curved
Scan depth: 15 cm

C35xp



Applications:
abdominal, musculoskeletal,
nerve
8-3 MHz Curved
Scan depth: 16 cm

C60xp



Applications:
abdominal, gyn,
musculoskeletal, nerve, ob
5-2 MHz Curved
Scan depth: 30 cm

ICTxp



Applications:
gyn, ob
9-5 MHz Curved
Scan depth: 15 cm

P10xp



Applications:
abdominal, cardiac, neonatal
8-4 MHz Phased
Scan depth: 15 cm

P21xp



Applications:
abdomen, cardiac, lung, ob,
orb, TCD
5-1 MHz Phased
Scan depth: 35 cm

HFL38xp



Applications:
arterial, breast,
musculoskeletal, nerve,
small parts, venous
15-6 MHz Linear
Scan depth: 6 cm

HFL50xp



Applications:
breast, musculoskeletal, nerve,
small parts
15-6 MHz Linear
Scan depth: 6 cm

HSL25xp



Applications:
arterial, lung, musculoskeletal,
nerve, ophthalmic, superficial,
venous
13-6 MHz Linear
Scan depth: 6 cm

L25xp



Applications:
arterial, lung, musculoskeletal,
nerve, ophthalmic, superficial,
venous
13-6 MHz Linear
Scan depth: 6 cm

L38xp



Applications:
arterial, lung, nerve, small
parts, venous
10-5 MHz Linear
Scan depth: 9 cm

Needle guides and kits available with the following transducers:
C35xp, C60xp, HFL38xp, HFL50xp, ICTxp, L25xp, L38xp, P10xp, and P21xp.
A transverse needle guide is available with the L25xp.



Designed from the ground up for your work style and work environment, X-Porte offers you an entirely new ultrasound experience by providing these revolutionary tools in a unique, integrated system exclusive to SonoSite.

SYSTEM SPECIFICATIONS

Stand Dimensions: 26.4" L x 21.2" W
Stand Height: max 64" (monitor up) / min 42.2" (monitor down)
Height Adjustment: 9" travel
12.1" Capacitive Touch Screen (multi-touch gestures for system controls)
System Boot-up: <20 secs
HD Monitor: 19" diagonally
Control Panel Tilt Adjustment: 0 to 110 degrees
Clinical Monitor Viewing: 85 degrees left and right, 60 degrees up, 80 degrees down
Architecture: All digital broadband
Dynamic Range: Up to 183 dB
Gray Scale: 256 shades
HIPAA Compliance: Comprehensive toolset

IMAGE MODES

2D, Broadband imaging
Tissue Harmonic Imaging
Pulse Inversion Harmonic Imaging
M-Mode (update and simultaneous)
Velocity Color Doppler
Color Power Doppler
Pulsed Wave Doppler
Pulsed Wave Tissue Doppler
Continuous Wave Doppler, ECG

IMAGE PROCESSING

Extreme Definition Imaging (XDI)
SonoAdapt Tissue Optimization
SonoHD2 Imaging Technology
SonoMB Multibeam Technology
Dual Imaging
Dual Color Imaging
AutoGain and AutoGain Brightness Adjust
Restore Default Gains
Dynamic Range
Duplex Imaging
8x Zoom Capability
Post Processing: Dynamic Range, Zoom

2D Image Optimization: Average and Difficult
Overall Gain, Near and Far Field Gain Control
Color and Doppler Flow Optimization (low, medium, high)
Color Variance Mode
2D Reduced Imaging Sector

STEEP NEEDLE PROFILING

(Available on these transducers and exams.)
HFL50xp: Breast, MSK, Nerve, Small Parts
L38xp: Arterial, Nerve, Small Parts, Venous
L25xp: Arterial, Nerve, MSK, Venous
HSL25xp: Arterial, MSK, Nerve, Venous
HFL38xp: Arterial, Breast, MSK, Nerve, Small Parts, Venous

POWER SUPPLY

System operates via battery or AC Power
Rechargeable lithium-ion battery
Battery life: 1.0 hour, 3 days on idle
Battery charges to 80% capacity in 3 hours

OTHER HIGHLIGHTS

Programmable Controls
Labeling: Predefined Labels, Customized Labels, Predefined Pictograms
Worksheets: Acute Care Worksheets (ACEP Guidelines) and Musculoskeletal Worksheets
Steep Needle Profiling software
*Embedded DVR (Digital Video Recorder)
*Triple Transducer Connect
*Storage Basket
*VGA Video Out

**Standard with X-Porte*

ONBOARD IMAGE AND CLIP STORAGE REVIEW

2D Cine Review – 20 seconds
PW, CW, M-Mode Cine Review – 16 seconds
Internal Flash Memory – 64 GB
Thumbnail review of saved images and clips
Prospective and Retrospective Clip Store

Auto Clip Export (auto export to USB at end of study)
Video clip playback at 1, ½ or ¼ of the captured rate
Video Clip Save Lengths: 2, 4, 6, 10, 15, 30 and 60 seconds.
Annotations on recalled images
Image Format: jpeg, avi, bmp
Export Format: html
JPEG Compression Options: High, Medium, Low

DATA MANAGEMENT AND WIRELESS

5 USB 2.0 Ports
Ethernet Port
DVR USB Port
ECG Connector
Barcode auto-query (populates patient's demographic from worklist)
DICOM Image Management: Print, Store, Modality Worklist, Perform Procedure Step (PPS), Storage Commitment
DICOM Image Management: Exam Routing for Diagnostic, Procedure, Education Exams
Embedded Wireless Option: 802.11 (B, G, and N networking)

ACCESSORIES

Medical Grade Black and White Printer (Sony UP-D897 USB B&W printer)
PowerPark
USB Bar Code Reader
Footswitch
ECG Module

SUPPORTED LANGUAGES

English, French, Italian, Portuguese, Spanish, German

ONBOARD GUIDES

Ultrasound Imaging Basics; Packages for Acute Care, MSK, Procedures, Anesthesiology
On-board System Help

Note: Desktop configuration available.



FUJIFILM SonoSite, Inc.
Worldwide Headquarters
21919 30th Drive SE, Bothell, WA 98021-3904
Tel: +1 (425) 951-1200 or +1 (877) 657-8050
Fax: +1 (425) 951-6800
www.sonosite.com/products/x-porte